



Anis Trend:- Picking System & Autobaler

- **5 material Picking station**
- **Pass through for glass and aggregates**
- **Air Conditioned Picking Rooms** (if req)
- **Steel Clad and insulated**

Pre-treatment (options)

- **Bag openers**
- **Course Shredding**
- **Eddy Current Separators**
- **Over Band Magnet separators**
- **Air Classification**

Bunker Storage:-

Picked materials are stored in individual bunkers underneath the picking station.

Each bunker is monitored and once full; the bunker is discharged onto the in-floor chain conveyor and transported to the Autobaler.

The bunker discharge control can either be manual or automatically controlled.

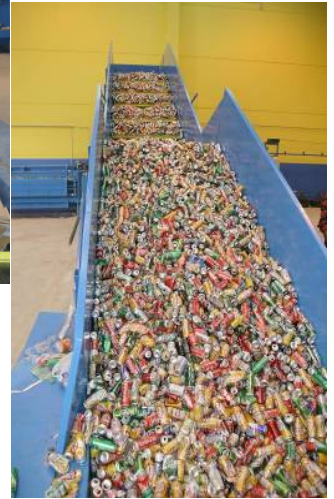
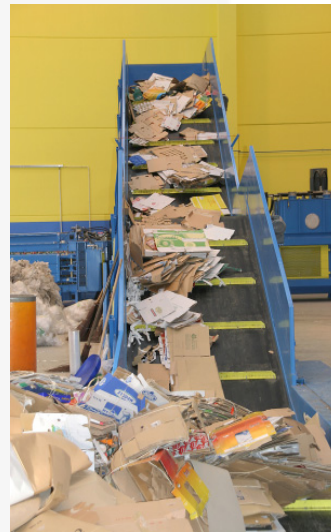
Systems are configured to suit each project.

Separation Conveyors:-

Baler feed conveyors design to provide a material buffer and even out bulky materials prior to processing in an Anis ATS 110.110 Autobaler.

Complete Control over the Operation

With the user-preset material programs, this enables the ATS presses to bale different materials; time and time again. When required the material setting can be changed by selecting the 'name' of the material to be baled next. The PLC controls remember the settings to make a perfect bale first time. This feature is very useful, for waste merchants with multiply materials.



TGV – Heavy Duty Chain Conveyors -

- Designed to suit individual requirement
- Steel Slat, rubber belted, with steel flights

www.autobaler.co.uk

Storage Bunkers.

- Push through bunker with double doors
- Integral bay discharge conveyor/s
- Pusher ram discharge options

Door Options

- Vertical Automatic doors
- Manual Barn Door

Push Wall options

- Steel
- Wooden
- Pre-Cast Concrete

Controls Options

- Fully Automatic Controls and indicators
- Bay Indicators with Manual discharge

System safety controls

- Integrated Dual Channel Redundancy